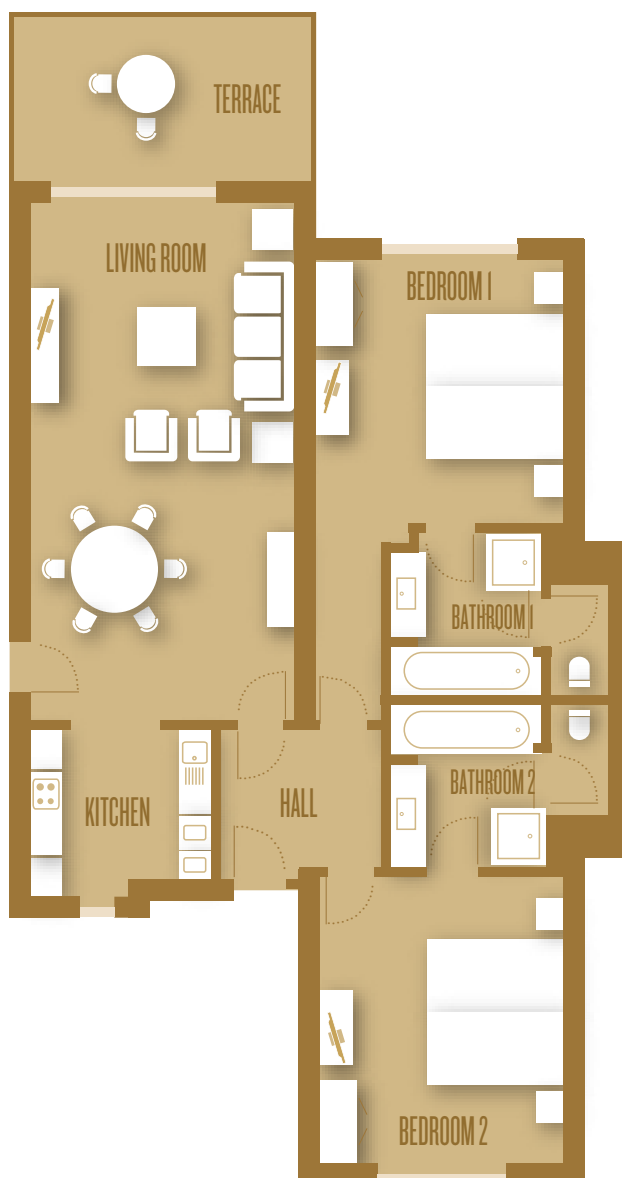


LAS LOMAS VILLAGE

ENJOY AND INVEST



2-BEDROOM APARTMENT

TOTAL BUILD: 107,96 m²

Terrace: 9,32 m²

Living room: 16,32 m²

Bedroom 1: 16,77 m²

Bathroom 1: 6,41 m²

Bedroom 2: 16,03 m²

Bathroom 2: 6,53 m²

Kitchen: 6,51 m²

Hall: 3,92 m²